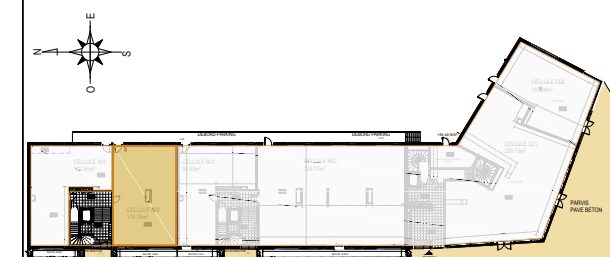
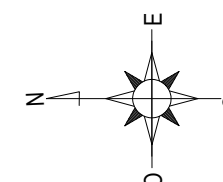
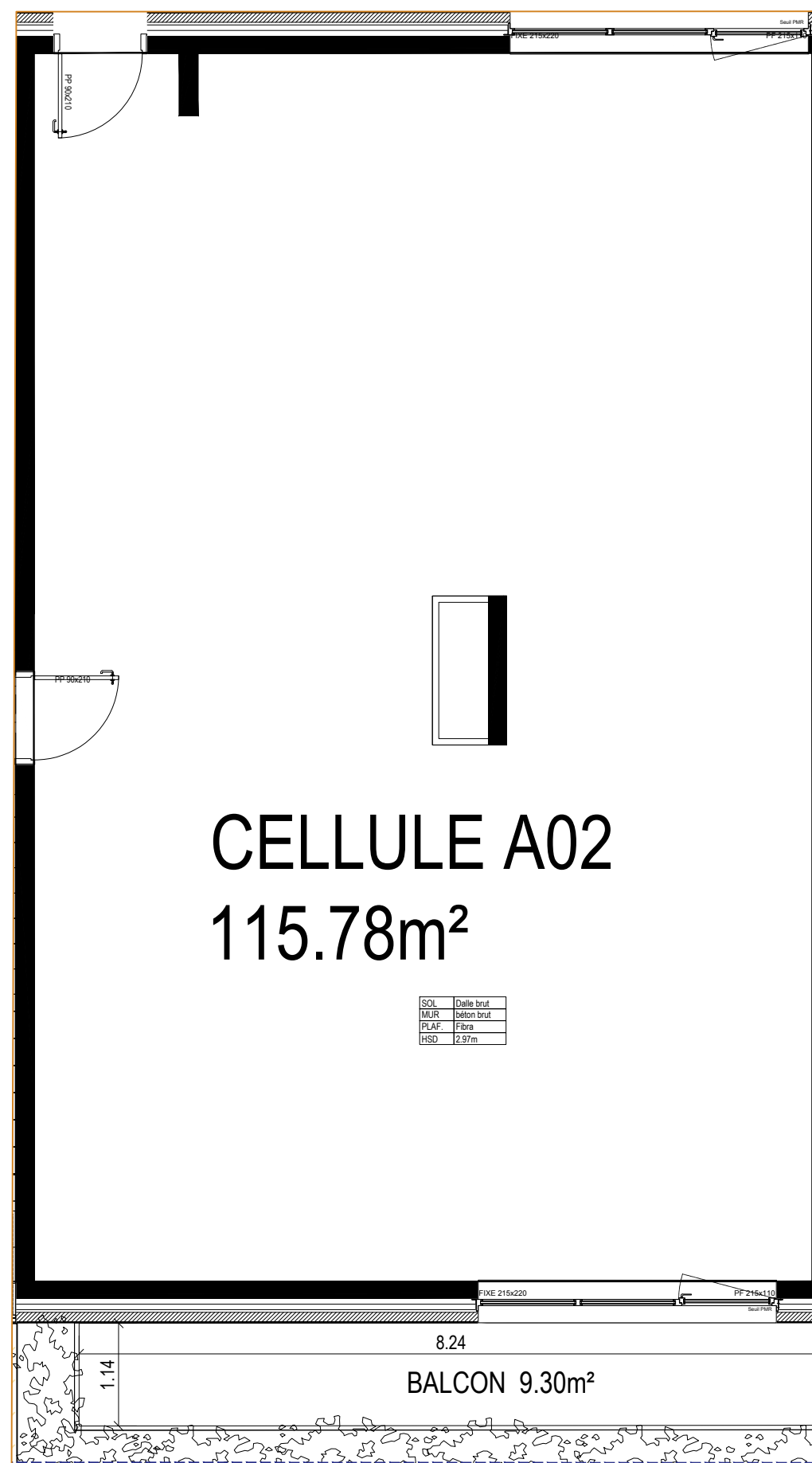


TOURCOING- EQUINOX



BATIMENT	LOT	ETAGE	TYPOLOGIE
A	02	RDC	Cellule

SURFACE BRUTE : 115.78m²
BALCON: 9.30m²



Ce plan est établi sur la base du permis de construire. La mise au point technique de chantier peut engendrer des modifications mineures (dimensions, soffites, faux-plafonds,...)

VERSION NOTAIRE
25/07/2017

