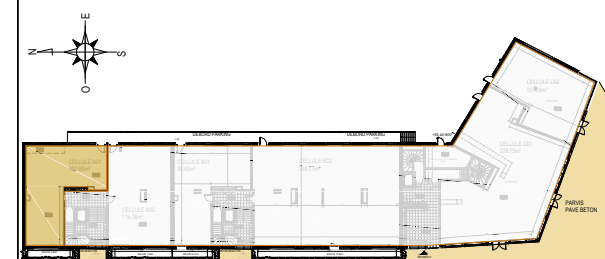
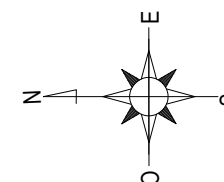
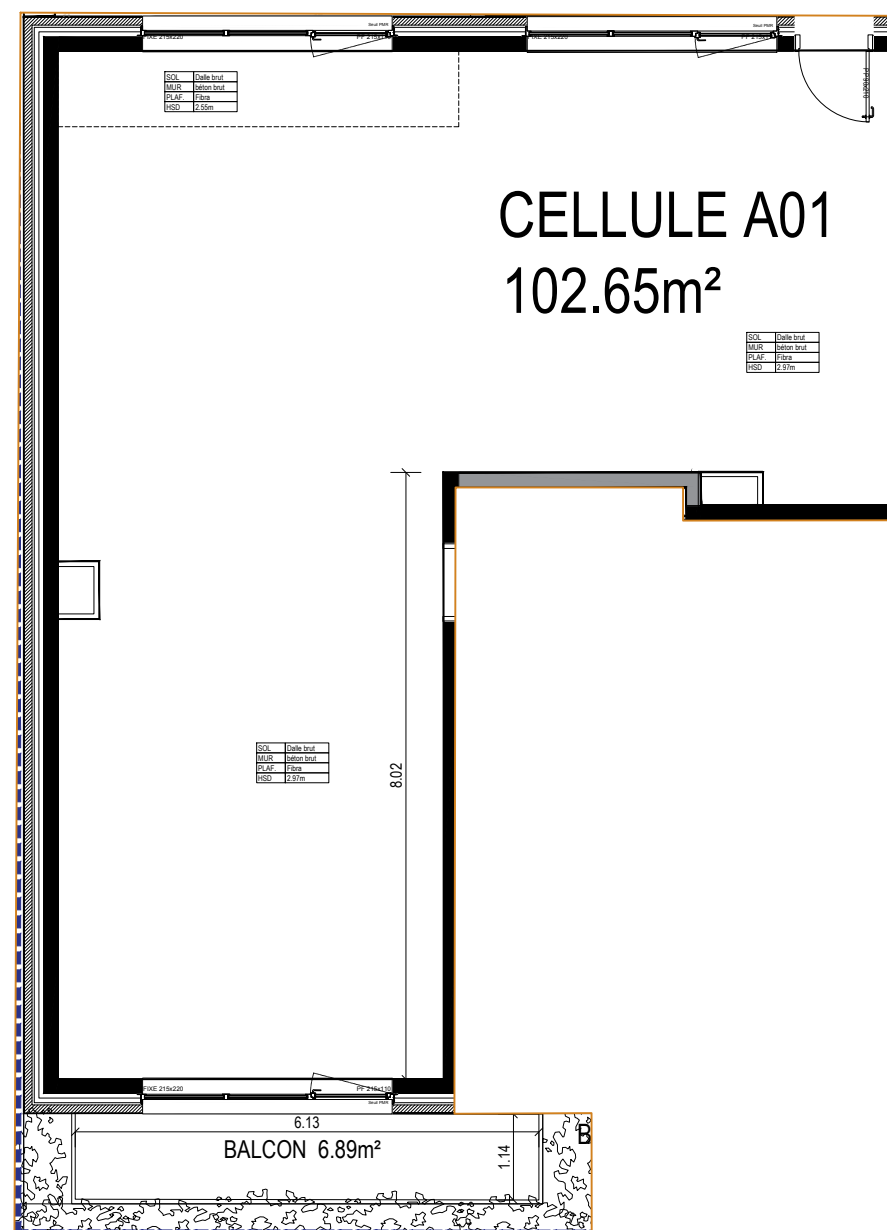


TOURCOING- EQUINOX



BATIMENT	LOT	ETAGE	TYPOLOGIE
A	01	RDC	Cellule

SURFACE BRUTE : 102.65m²
BALCON: 6.89m²



Ce plan est établi sur la base du permis de construire. La mise au point technique de chantier peut engendrer des modifications mineures (dimensions, soffites, faux-plafonds,...)

VERSION NOTAIRE
25/07/2017

