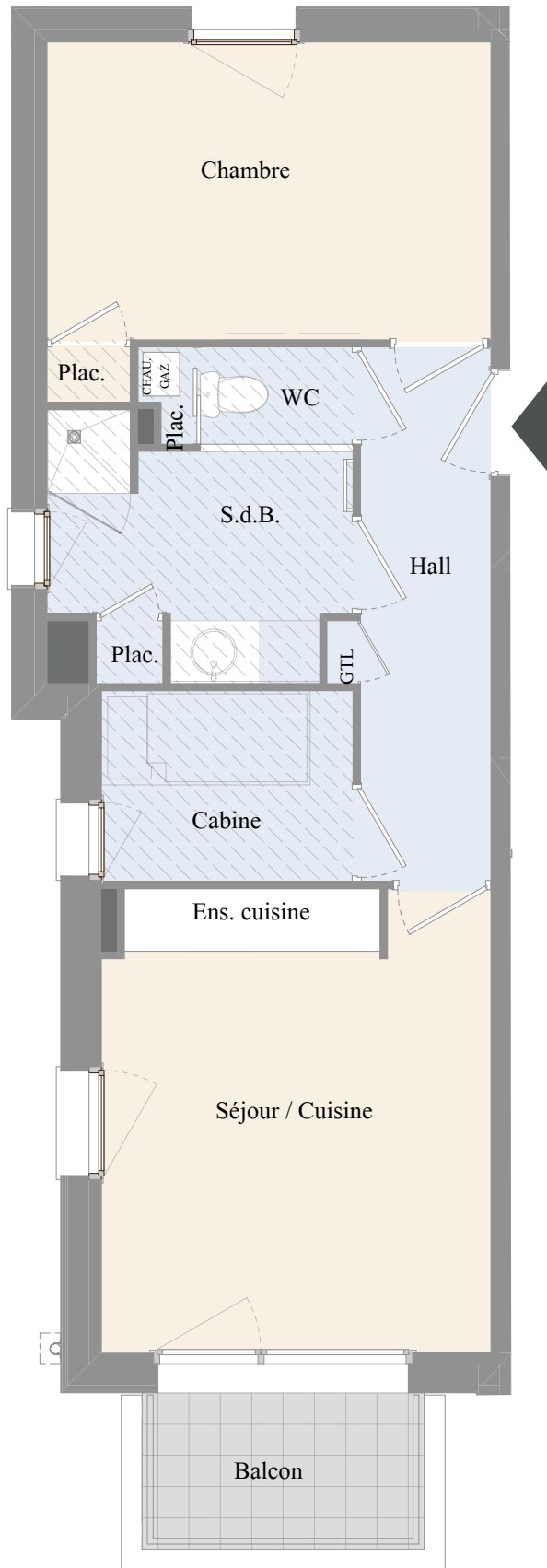


Appartement B11 Type 2 Cabine

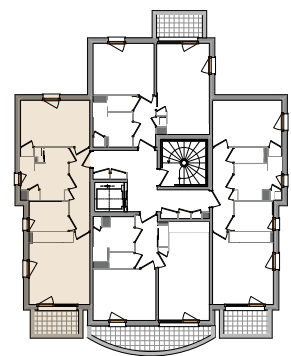


Soffite

1,5 cm = 1 m

13

	Surface habitable
Hall	6,39
Séjour / cuisine	16,35
Chambre	12,11
Salle de bains	5,79
WC	1,36
Cabine	4,40
Placards	1,20
Total	47,60 m²
Balcon	4,05m ²



Premier étage